

Aluminum Dual Rated Lugs - Four Hole Tongue Types LA4M4 and LA4D4

For use with four copper or aluminum conductors

- Manufactured from high strength aluminum alloy extrusion
- Electro-tin plated to ensure minimum contact resistance and protection against corrosion when used with copper wire
- Four hole mounting pad allows for maximum surface contact in heavy duty applications
- Larger connector sizes utilize tandem set screws that provide superior mechanical performance*
- Connectors are rated for 600 V, 90°C applications
- The use of oxide inhibitor is recommended for all aluminum terminations

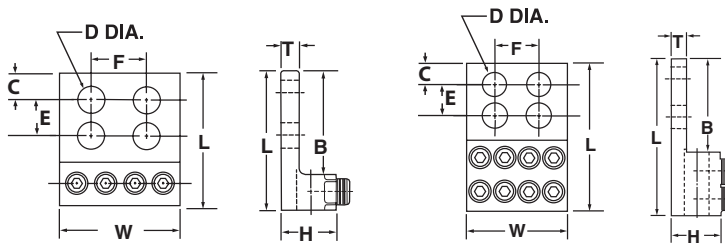


FIG. 1

FIG. 2

UL
486A-486B
LISTED
AL9CU

RoHS
COMPLIANT



| CATALOG NUMBER | FIG. NO. | CONDUCTOR RANGE | APPROXIMATE DIMENSIONS (IN.) | | | | | | | | MTG. BOLT SIZE | HEX SIZE | |
|----------------|----------|--------------------|------------------------------|------|------|-----|------|-----|----------|------|----------------|----------|------|
| | | | L | W | H | T | B | C | D (DIA.) | E | | | F |
| LA4M4-250 | 1 | 6 Str. - 250 kcmil | 4.00 | 4.05 | 1.19 | .31 | 3.00 | .63 | .56 | 1.75 | 1.75 | 1/2 | 5/16 |
| LA4M4-350 | 1 | 6 Str. - 350 kcmil | 4.50 | 4.72 | 1.38 | .31 | 3.25 | | | | | | 3/8 |
| *LA4D4-600 | 2 | 2 Str. - 600 kcmil | 5.50 | 5.33 | 1.50 | .38 | 3.25 | | | | | | 3/8 |
| *LA4D4-800 | 2 | 350 - 800 kcmil | 6.19 | 7.16 | 1.88 | .56 | 3.44 | | | | | | 1/2 |